

## FCR 21/60

ACCESSORIES

PRODUCT-NO.: 071330

### The main features

Replaceable copper heating element

---

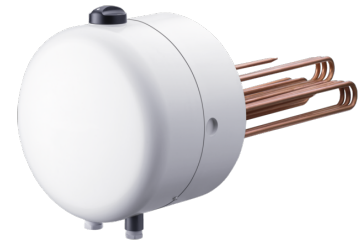
For matching to individual usage scenarios

---

High hot water convenience thanks to powerful heating elements

---

Variable temperature setting via rotary selector



**FCR 21/120 E**

Product-No.: 071331

---



**FCR 28/120 E**

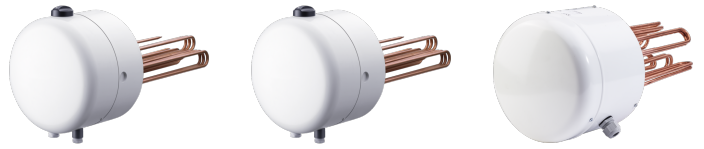
Product-No.: 000694

---



**FCR 28/180 E**

Product-No.: 000695



Type	FCR 21/60	FCR 21/120 E	FCR 28/120 E
Part no.	071330	071331	000694

## Technical data

Connected load ~ 230 V	2-4 kW	4 kW	
Connected load ~ 400 V	2-6 kW	8/12 kW	12 kW
Power supply	1/N/PE, 3/N/PE	1/N/PE, 2/N/PE, 3/PE	3/PE
Rated voltage	230/400 V	230/400 V	400 V
Coil voltage	230 V	230 V	400 V
Frequency	50/60 Hz	50/60 Hz	50 Hz
Version	Dual/single circuit	Single circuit	Single circuit
Integral contactor	X	-	X
IP rating	IP24	IP24	IP24
Immersion depth	400 mm	400 mm	325 mm
Flange diameter	210 mm	210 mm	280 mm



Type	FCR 28/180 E
Part no.	000695

### Technical data

Connected load ~ 230 V	
Connected load ~ 400 V	18 kW
Power supply	3/PE
Rated voltage	400 V
Coil voltage	400 V
Frequency	50 Hz
Version	Single circuit
Integral contactor	X
IP rating	IP24
Immersion depth	325 mm
Flange diameter	280 mm

## **Contact information**

Do you have additional questions? Then please do not hesitate to contact us, we would be only too happy to help:

Call 0151 436 96

Or send an e-mail to

[sales@stiebel-eltron.ie](mailto:sales@stiebel-eltron.ie)

Only a qualified contractor should carry out the installation, commissioning, maintenance and repair of this appliance. Where applicable and prior to installation the electricity and/or water utility companies should be notified of your intention to install the product.