

# AWU-HS 2.5

## ACCESSORIES

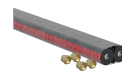
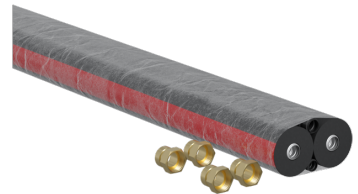
PRODUCT-NO.: 207718

### The main features

Suitable for new build and modernisation projects

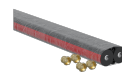
Can be combined with freely routed KG/HT pipe DN200

Easy insertion thanks to friction-optimised casing



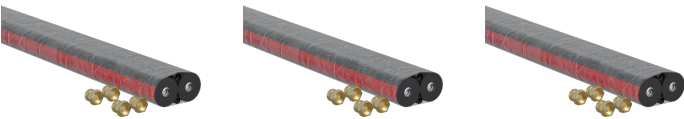
**AWU-HS 5**

Product-No.: 207719



**AWU-HS 10**

Product-No.: 207720



Type	AWU-HS 2.5	AWU-HS 5	AWU-HS 10
Part no.	207718	207719	207720

Technical data

For pressure hose size DN	25	25	25
Length	2,5 m	5 m	10 m
Thermal insulation thickness	100 mm	100 mm	100 mm
External diameter incl. insulation	320 mm	320 mm	320 mm

**Contact information**

Do you have additional questions? Then please do not hesitate to contact us, we would be only too happy to help:

Call 0151 436 96

Or send an e-mail to

[sales@stiebel-eltron.ie](mailto:sales@stiebel-eltron.ie)

Only a qualified contractor should carry out the installation, commissioning, maintenance and repair of this appliance. Where applicable and prior to installation the electricity and/or water utility companies should be notified of your intention to install the product.